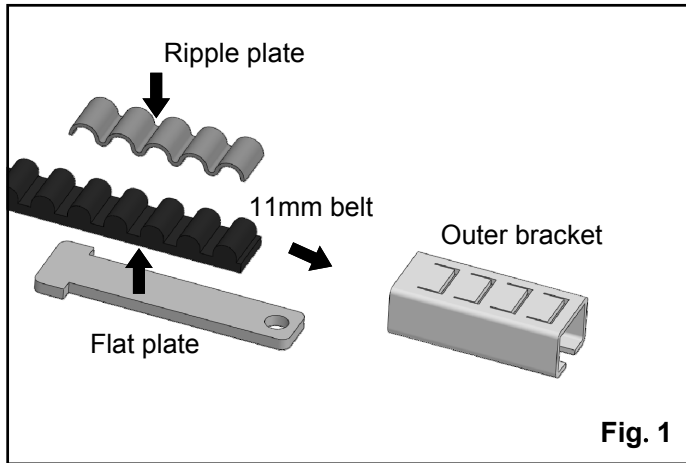


# Belt Crimp Replacement Kit for 11mm Steel Reinforced Polyurethane Belt

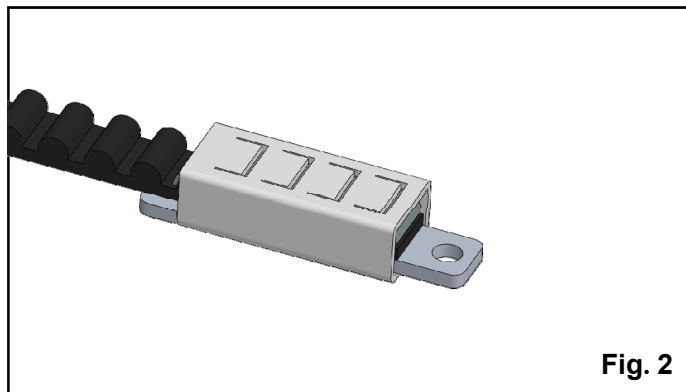
**⚠ Note**

Please take necessary safety precautions. Wear safety gloves and goggles when working with metal.



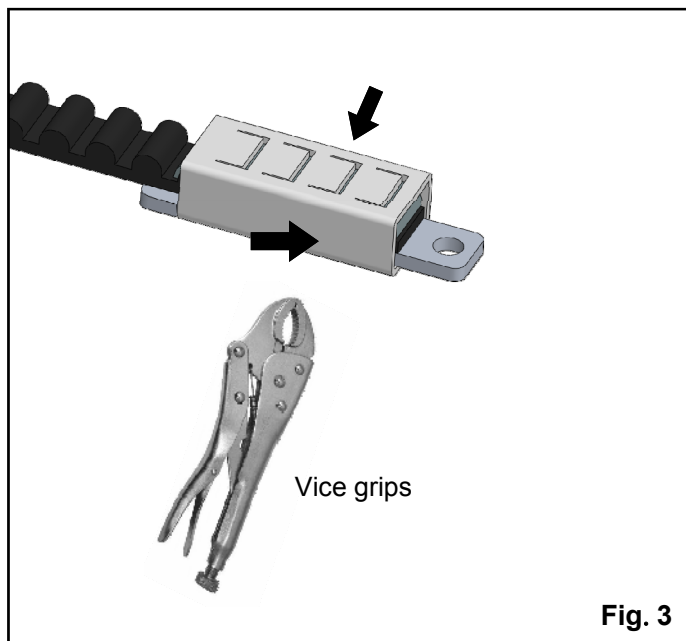
**Fig. 1**

1. Attach the ripple plate and the flat plate on the belt as shown, and insert into the outer bracket.



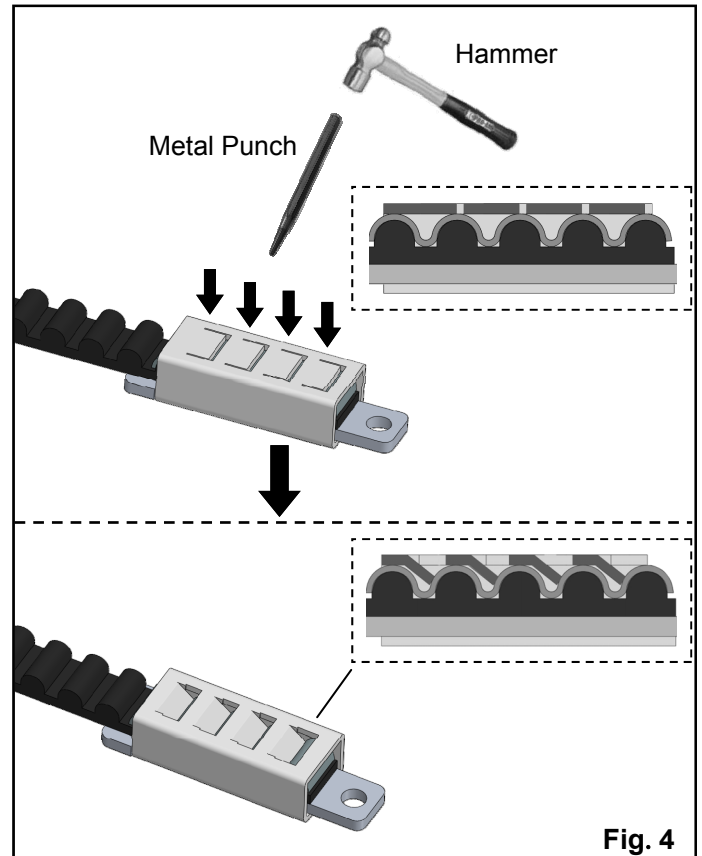
**Fig. 2**

2. Confirm the assembly with proper orientation of the pieces as shown.



**Fig. 3**

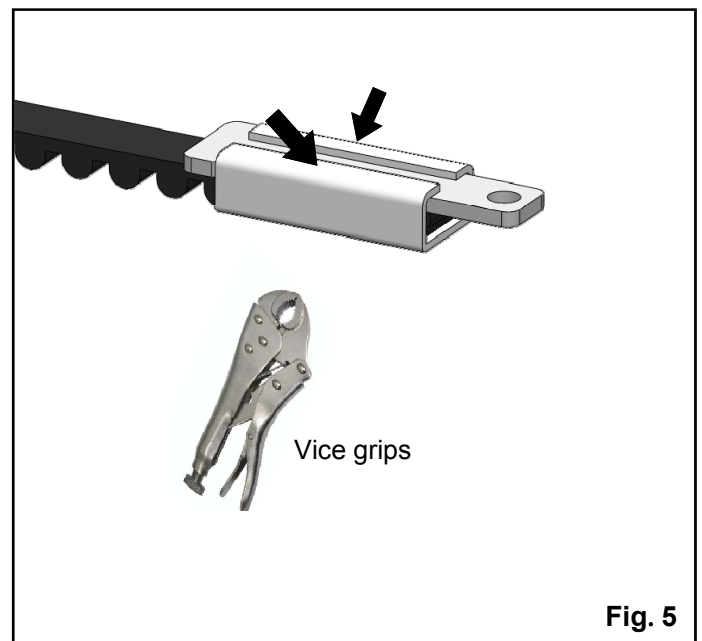
3. Use a pair of vice grips to firmly crimp the spots indicated by the arrows on the outer bracket.



**Fig. 4**

4. Set the bracket assembly on a hard wood or soft lead block.

Position a metal punch over an opening on the outer bracket and strike down firmly until the tab bends and grips the ripple plate beneath. Repeat on each tab.



**Fig. 5**

5. Use a pair of vice grips to crimp the spots as shown by the arrows on the back of the outer bracket. Deform the bracket for a firm assembly.